



# Indicadores de gestión

## PAGOSCOB

### Concello de Vigo

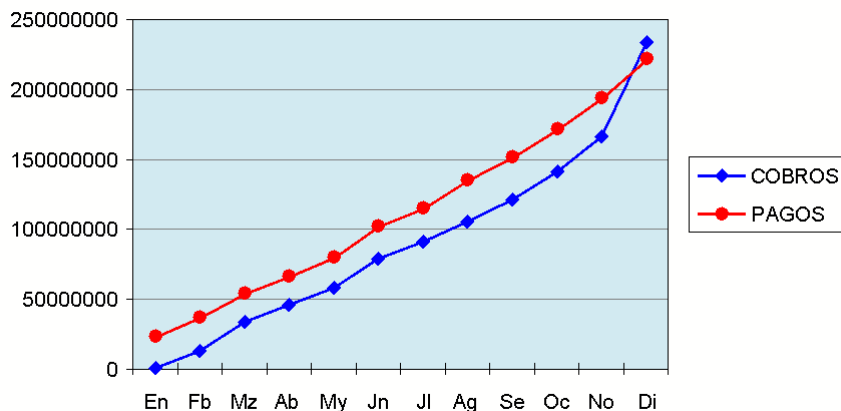
Ejercicio 2012

Lunes, 25 de febrero de 2013

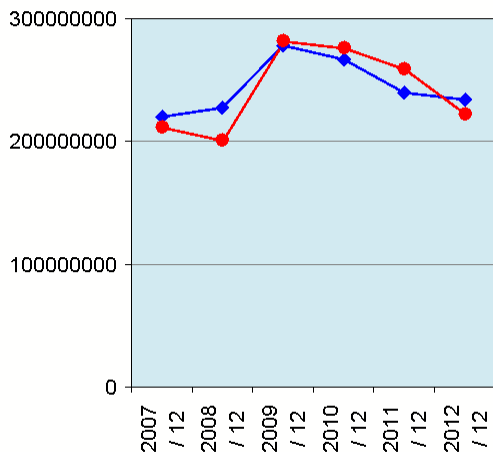
Evolución hasta 12/ 2012

Ver Magnitudes

	COBROS	PAGOS
En	1.048.992,65	23.802.754,32
Fb	12.716.097,74	37.577.972,49
Mr	34.002.253,23	54.357.934,79
Ab	45.573.825,44	66.885.317,71
My	57.887.295,21	80.076.301,82
Jn	78.902.136,75	102.686.867,58
Jl	90.751.918,93	115.646.815,50
Ag	105.508.255,79	135.119.192,26
Se	120.941.638,89	152.065.129,75
Oc	140.887.878,35	172.248.425,26
No	166.396.169,39	194.215.423,21
Di	233.752.583,99	222.204.225,01



Evolución últimos ejercicios



	COBROS	PAGOS
2007 / 12	220.087.049,24	212.099.509,20
2008 / 12	227.697.907,67	201.272.175,95
2009 / 12	278.282.973,06	282.272.879,23
2010 / 12	266.663.021,01	276.639.474,00
2011 / 12	239.377.036,52	259.168.263,46
2012 / 12	233.752.583,99	222.204.225,01