



Indicadores de gestión

Pagos y Cobros

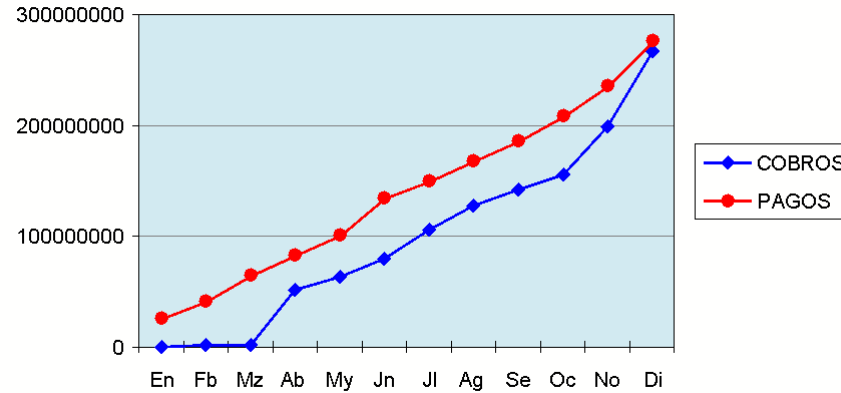
Ejercicio 2010

viernes, 04 de marzo de 2011

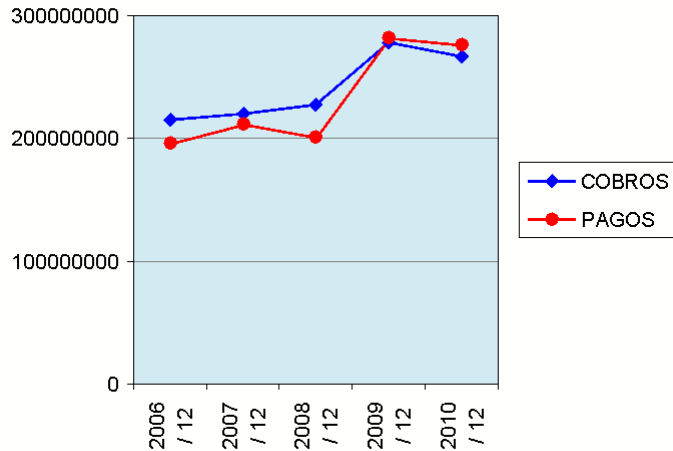
Evolución hasta 12/ 2010

Ver Magnitudes

	COBROS	PAGOS
En	176.736,55	26.347.033,30
Fb	2.177.539,11	41.916.414,44
Mr	2.168.048,04	64.867.486,52
Ab	51.306.581,47	82.790.061,94
My	63.307.187,11	101.657.636,48
Jn	79.476.866,00	135.021.156,17
Jl	105.793.636,54	150.377.048,87
Ag	127.231.163,08	168.261.116,23
Se	141.878.651,32	185.773.367,33
Oc	155.580.162,31	208.860.074,45
No	198.957.225,08	236.285.015,87
Di	266.663.021,01	276.639.474,00



Evolución últimos ejercicios



	COBROS	PAGOS
2006 / 12	215.042.881,80	196.020.388,06
2007 / 12	220.087.049,24	212.099.509,20
2008 / 12	227.697.907,67	201.272.175,95
2009 / 12	278.282.973,06	282.272.879,23
2010 / 12	266.663.021,01	276.639.474,00